



# Community Support Services

## FOR THE MONTH – June 2016.

### OUR CONTACT NUMBERS FOR 24/7 ASSISTANCE:

OFFICE – 011 791-7917 (07H00 – 18H00, Monday to Friday)

ALL AREAS SUPERVISOR ON DUTY – 082 411-2011

RRVA – 072 230-9193

Welridge / Riverwel – 072 230-7200

RPRCPA and Open Areas – 072 230-8811

Sonneglans / Bromhof / Boskruin – 072 230-4636

Malanshof / Moret / Ruiterhof / Linden Sector 3 – 072 231-0811

OPERATIONS MANAGER – 079 872-1136

### Standard Operating Procedures at night:

Our Reaction Officer will not access your property at night until we have confirmation that you are aware or have requested his presence or informed us that there is no-one on the property. Once we receive an Alarm activation we will telephonically make contact with you to inform you that our vehicle is on route and that our Reaction Officer may require access to your property. These procedures are in place to prevent a possible incorrect interpretation of suspecting an unauthorized person on your property and taking the wrong action.

**CRIME RELATED** – Contact Crimes are still a worry with an increase in Street and Driveway Robberies. Please ask your Domestic staff to rather walk in groups if they can, and not to walk in the Street after dark. Be alert to vehicles and or pedestrians nearby when you enter or leave your property.

## Contents

### Special Interest Articles

For the Month	1
Success Story	2

### Area Specific Incidents

Randparkridge	1
Weltevredenpark	2
Sonneglans	3
Bromhof	4
Malanshof	5
Complexes	6

### Products & Services



Isaac - Well Done!

## Success Stories

A resident called in to inform us of a suspicious B/M dressed as if he was a water meter contractor. The water contractors chased him after he hacked a main power cable, he dropped his tools and ran. However Isaac was patrolling about 20 minutes later and found him and arrested him for attempting to steal cable.



Dangerous Situation was contained

## Area specific incidents

### HONEYDEW PRECINCT:

#### RANDPARKRIDGE (RRVA area):

2 House Breakings, 1 Street Robbery, 1x Theft out of Motor Vehicle.  
Streets affected by the crime : Appelblaar, Essenhout, Karee & Oudoring, Mimosa  
Otherwise a quiet Month for RRVA.

### RPRCPA:

2 Attempted housebreakings.  
1 in Privet Circle. The resident saw the suspect he was wearing white takkies, shaved head, and had a pink/orange school bag – the resident screamed and pressed her panic and the suspect fled.  
1 in Klapperboom. Window had been broken but nothing was stolen.  
In Klapperboom a sliding door to a house was tampered with.

### COMPLEXES:

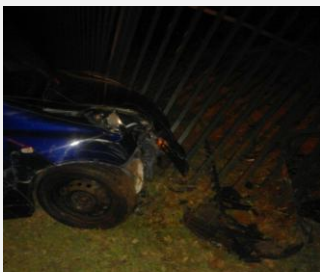
All Quiet, nothing to report.

### WELTEVREDENPARK/RANDPARKRIDGE (Welridge & Riverwel areas)

**Wow residents!** This has been a great month 😊, with only 1 garage broken into and a bicycle stolen and an attempted ATM scam at Welties Spar Centre. Your crime has reduced dramatically. Unfortunately there are still residents in Sycamore, Anaboom and cockspur that are leaving their gates open. None of them are members but our patroller made contact with them or their armed response companies to get in touch with them to close their gates 😊

**RiverWel** - 1 x House Robbery, 1 x House Breaking, 1 x theft out of Motor Vehicle, 1 x Motor Vehicle Accident.

Kingston Village ( A resident who lives in sycamore Street , bashed his vehicle into the wall – no injuries), Nala Street (EC Client) Could not get much info except that TV and electrical equipment was stolen. Dolfhout Str (Theft out of MV) a suit jacket was stolen. House Robbery - One suspect smashed the large main bedroom window and stole 2 rings and a cell phone after fighting with the home owner, slight injuries.



## CSS

PO Box 71  
Northriding  
2162  
011 791-7917  
086 609-0464  
info@support-services.co.za

*We are there 4 you!*

Find us on the Web:  
[www.support-services.co.za](http://www.support-services.co.za)  
Facebook: Community Support  
Services  
Twitter: @CSSProtection

### PRODUCTS & SERVICES –

We offer security installations and maintenance (Alarms, Outdoor Beams, Gate Motors, Intercoms, CCTV and Electric Fence installations.

Armed response to members of Resident's Associations or our safety & security package.

### NEW Rates as of 1 June 2016

- Safety & Security Package – Pro-Active – R98.04
- Full Package – Pro-Active and Armed Response – R369.00
- Full Package – Pensioner – R309.00

These prices exclude the contracted Residential Association Areas and Town House complexes we work with.

Community Support Services is your one stop safety and security provider, call us 011 791 7917 (office hours).

**Follow us on our Face book Page and find useful information on our website.**

**Find our D6 Communicator info on our Website.**

### **SONNEGLANS:**

#### **2 x House Breakings, 1 x Street Robbery**

Streets affected by the crime : Maryna Crescent – Driveway Gate was breached, house security gate breached, front door bashed in. Response time was 2.5 minutes. TV, jewellery, Playstation 3 was taken.

Harry Sneece: 2 B/M's breached the main gate and broke the front door. Whilst the suspect was breaking the door he noticed the son sitting and watching TV and asked the boy where his dad was. The boy ran to fetch his dad who was in the bedroom. When he came through the TV was gone. He saw the suspect jumping into a white bakkie.

Witdoring Street: A tenant who resides in one of the properties in Witdoring was walking back from the Total Garage at **20h00** and was robbed by a B/M next to the greenbelt. The suspect stole the cell phone, R 500.00, car keys and groceries which he purchased at the shop at the garage – Woolworths, the corner of Pres Fouche and Witdoring). The victim suffered minor injuries to the head as the suspect hit him a couple of times with his gun. He managed to get away.

PLEASE RESIDENTS, I URGE YOU DO NOT WALK NEAR OR IN THE GREENBELTS WHEN IT IS DARK. THERE ARE ALWAYS OPPORTUNISTS. WHEN CHOOSING A COMPANY TO COME AND DO ANY INSTALLTIONS OR WORK TO YOUR HOME, MAKE SURE THAT IS A REFERRAL OR EVEN BETTER SOMEONE THAT YOU KNOW. NEVER TAKE RANDOM PEOPLE THAT LEAVE PAMPHLETS IN YOUR GATE OR PEOPLE OFF THE STREET.. SADLY YOU CANNOT TRUST JUST ANYONE.

### **BROMHOF:**

WOW ! We have got not incidents reported this month in your area ☺. That is really amazing. Well done to all of you. Unfortunately if there have been incidents, we were not made aware of them.

### **LINDEN PRECINCT:**

#### **MALANSHOF, MORET, FONTAINBLEAU, RUITERHOF**

#### **1 Driveway Robbery, 1 Theft, Driveway Robbery x 1, House Breaking x 1 House Breaking and 1 x theft of Motor Vehicle.**

Streets affected by the incidents:

Melda, Gertrude, Joseph Lewis, Protea Close, Ettienne Str

Regarding the incident in Melda. 3 B/M's rang the intercom and advised they are electricians. The domestic opened for them as they were expecting someone to come and fix the stove and they were doing renovations to the house.

Regarding the House Breaking and theft of motor vehicle in Ettienne : Suspects in a white Audi A3, broker the pedestrian gate and the pedestrian slider stealing a TV, I Pad, Laptop and bag .They found the car keys to the dark grey Hyundai 120 – CC07 KGGP and took the vehicle. The tracker showed that it was repeating in Alex. The alarm did activate.

In Vosloo Street an electric fence activated and CSS responded. A B/M tried to jump over from 3 Vosloo. Our technician went to repair the fence all in order. ☺